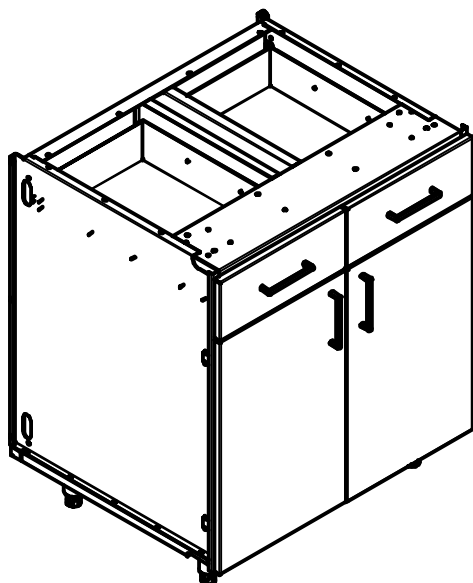




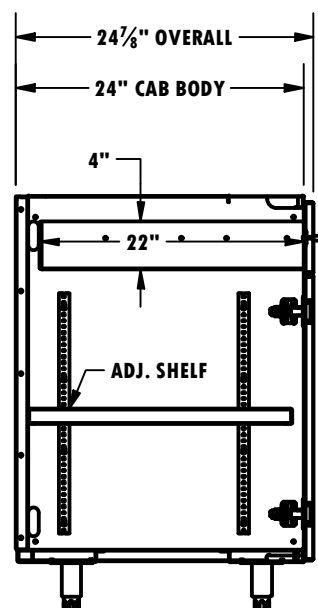
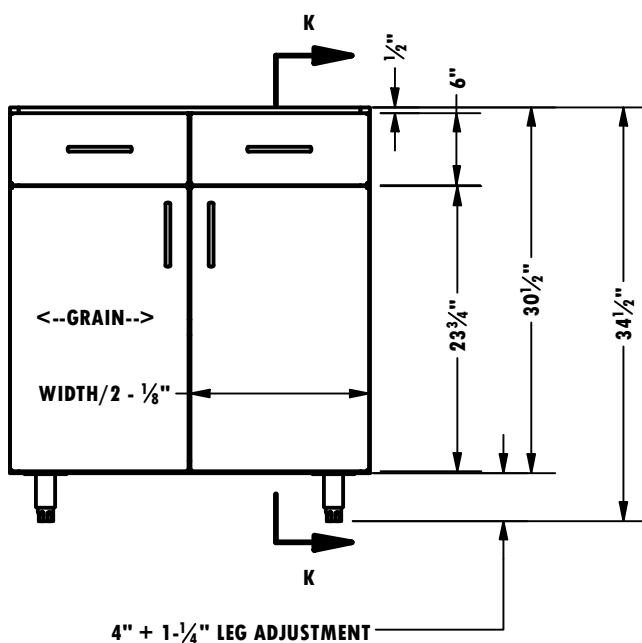
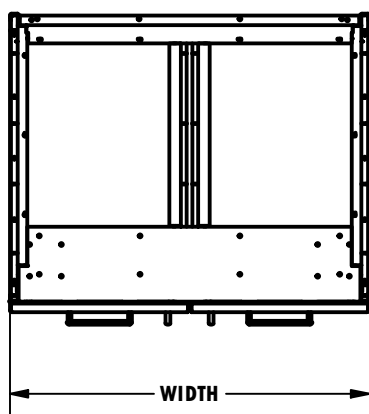
BXXDB2D 2 DRAWER 2 DOOR BASE CABINETS



CABINET TAG	DESCRIPTION
B24DB2D	BASE CABINET 2 HALF WIDE DW DB DOOR 24in WD
B27DB2D	BASE CABINET 2 HALF WIDE DW DB DOOR 27in WD
B30DB2D	BASE CABINET 2 HALF WIDE DW DB DOOR 30in WD
B33DB2D	BASE CABINET 2 HALF WIDE DW DB DOOR 33in WD
B36DB2D	BASE CABINET 2 HALF WIDE DW DB DOOR 36in WD
B39DB2D	BASE CABINET 2 HALF WIDE DW DB DOOR 39in WD
B42DB2D	BASE CABINET 2 HALF WIDE DW DB DOOR 42in WD
B45DB2D	BASE CABINET 2 HALF WIDE DW DB DOOR 45in WD
B48DB2D	BASE CABINET 2 HALF WIDE DW DB DOOR 48in WD

NOTES:
STAINLESS SOFT CLOSE HINGES
STAINLESS SOFT CLOSE DRAWER SLIDES
80LB RATED SLIDES

FOR 28" EXTRA DEEP CABINET BODY SPECIFY BXX28DB2D
XX = WIDTH



SECTION K-K
SCALE 3/4" = 12"